



2 EXISTING CONDITIONS

WHILE THE FOCUS OF THIS MASTER PLAN IS THE EMERGING NON-MOTORIZED SYSTEM WITHIN OAKLAND COUNTY, IT IS IMPORTANT TO UNDERSTAND THE LARGER CONTEXT OF TRAIL PLANNING AND DEVELOPMENT WITHIN THE STATE AND REGION. THIS CHAPTER ALSO HIGHLIGHTS THE MAJOR TRAIL SYSTEMS WITHIN OAKLAND COUNTY AS WELL AS RELATED INITIATIVES AND PROGRAMS.

2.1 STATE AND REGIONAL CONTEXT

There are a number of efforts throughout Michigan that have a direct impact on the Oakland County trail system and highlight the fact that the trails being planned and built within Oakland County are part of a much larger non-motorized effort. These initiatives and efforts are described on the following pages.

CONNECTING MICHIGAN PLAN

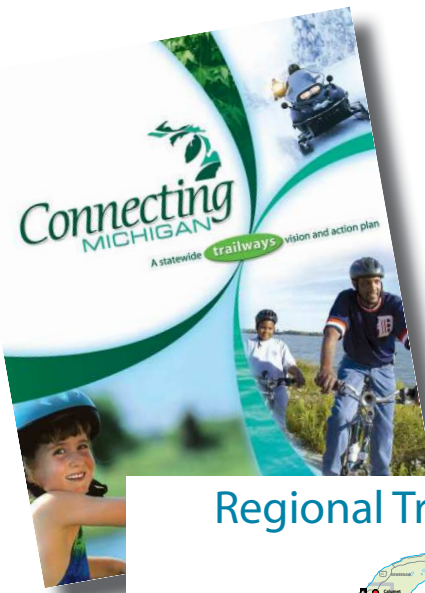
The year-long work of 10 task forces on statewide trail issues culminated in 2007 in the release of *“Connecting Michigan: A Statewide Trails Vision and Action Plan”*, a report issued by project partners: Michigan Trails and Greenways Alliance, the National Park Service Rivers, Trails, and Conservation Assistance Program, and Michigan Recreation and Park Association Trails, Greenways, and Blueways

Committee. The task forces each covered distinctly different topics:

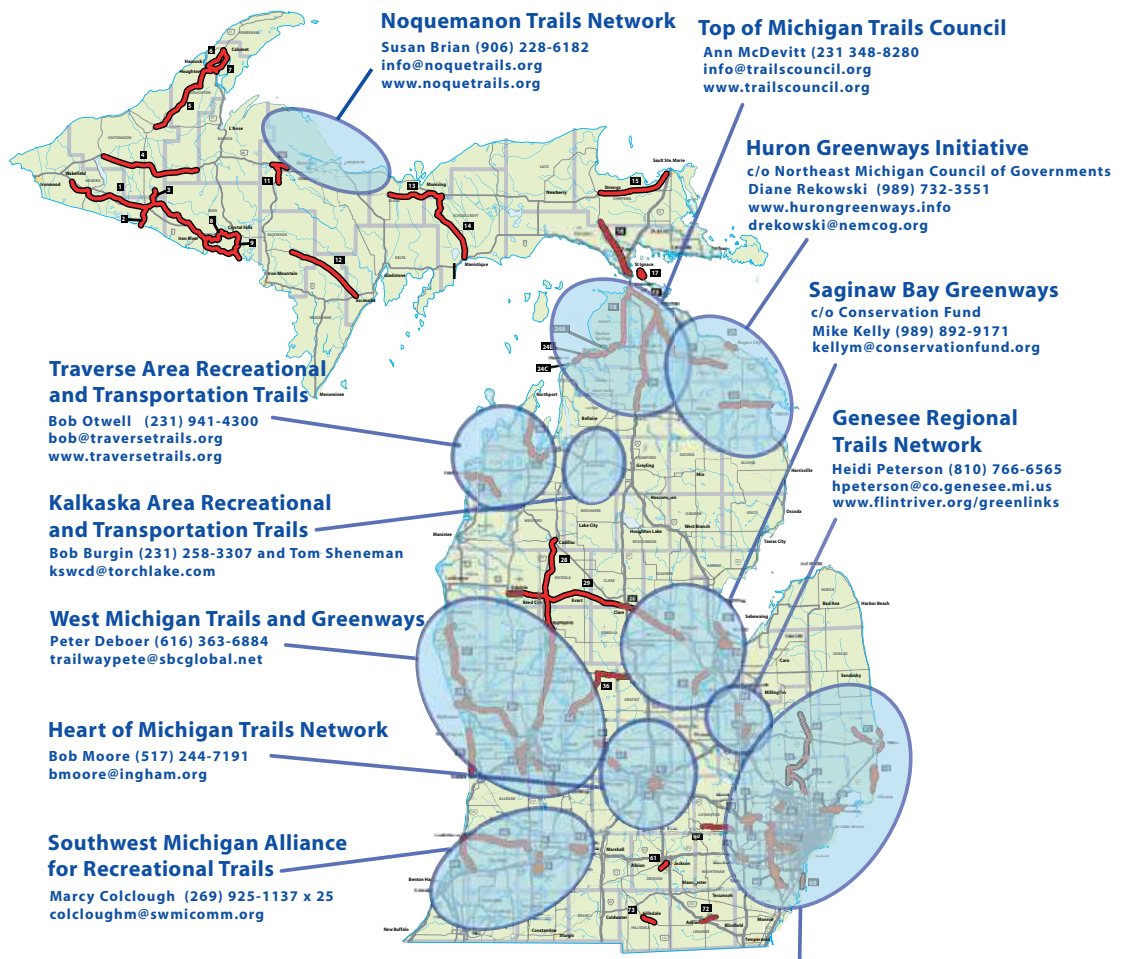
- Funding
- Programming
- Promotions
- GIS statewide trails mapping
- On-road connections to trails
- Private property easements
- Multi-use trail design standards
- Advocacy support
- Regional collaboration
- State and local interdepartmental coordination

The deliberations of these task forces comprised of over 100 individuals and resulted in 39 goals and 109 action steps. Four overarching goals emerged which form a framework for an interconnected trailway network that connects every region of the state. Goals of the Connecting Michigan Plan include:

- Ensure that Michigan’s trailway stakeholders have ready access to technical resources and best practices from Michigan and beyond, and across all the many facets of trailways planning, acquisition, development, maintenance, operations, and advocacy.
- Improve Michigan’s financial, maintenance, and marketing resources necessary for developing, promoting, enhancing, and sustaining a statewide interconnected trailway system.
- Improve coordination and communication, encourage cooperation, foster new partnerships to support trailway planning, development, management, and programming that enhances the trailway experience.
- Provide Michigan’s trailway stakeholders with a compelling statewide trailway vision and a tactical plan to achieve and market the vision.



Regional Trail Initiatives



Noquemanon Trails Network
 Susan Brian (906) 228-6182
info@noquetrails.org
www.noquetrails.org

Top of Michigan Trails Council
 Ann McDevitt (231) 348-8280
info@trailsCouncil.org
www.trailsCouncil.org

Huron Greenways Initiative
 c/o Northeast Michigan Council of Governments
 Diane Rekowski (989) 732-3551
www.hurongreenways.info
drekowski@nemcog.org

Saginaw Bay Greenways
 c/o Conservation Fund
 Mike Kelly (989) 892-9171
kellym@conservationfund.org

Genesee Regional Trails Network
 Heidi Peterson (810) 766-6565
hpeter@co.genesee.mi.us
www.flinriver.org/greenlinks

Traverse Area Recreational and Transportation Trails
 Bob Otwell (231) 941-4300
bob@traversetrails.org
www.traversetrails.org

Kalkaska Area Recreational and Transportation Trails
 Bob Burgin (231) 258-3307 and Tom Sheneman
kswcd@torchlake.com

West Michigan Trails and Greenways
 Peter Deboer (616) 363-6884
trailwaypete@sbcglobal.net

Heart of Michigan Trails Network
 Bob Moore (517) 244-7191
bmoore@ingham.org

Southwest Michigan Alliance for Recreational Trails
 Marcy Colclough (269) 925-1137 x 25
colcloughm@swmicomm.org

GreenWays Initiative
 Tom Woiwode (313) 961-6675
twoiwode@cfsem.org
<http://greenways.cfsem.org>

Downriver Linked Greenways
 Anita Twardesky (734) 626-5465
anita@riversidekayak.com
 Mary Bohling (313) 235-9159
bohling@msu.edu

Macomb County Trails
 John Crumm (586) 469-5285
john.crumm@co.macomb.mi.us
www.wadetrail.com/resources/macomb/index.htm

Oakland Trails Advisory Council
 Melissa Prowse (248) 858-4611
prosem@oakgov.com
http://www.oakgov.com/parksrec/program_service/trails_intro.html

St. Clair County Trails
 Mark Brochu (810) 989-6960
mbrochu@stclaircounty.org
www.stclaircounty.org

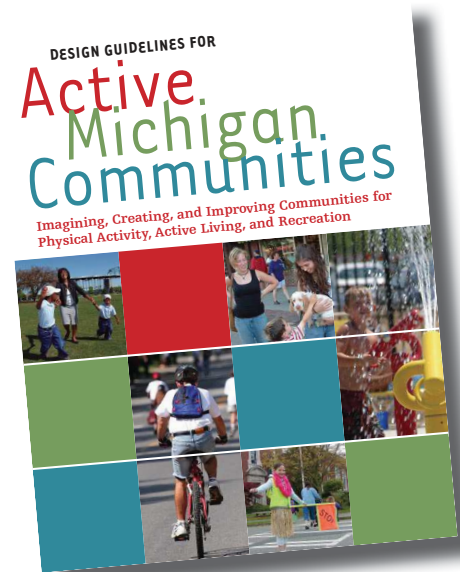
The Plan and accompanying endorsements are now being used to build momentum for funding, legislative action, and advocacy that will drive the implementation of the Connecting Michigan Plan. The Michigan Trails and Greenways Alliance will monitor the progress of the plan as well as undertake many of the action steps in addition to encouraging other groups to take the lead on other recommendations. MTGA will also dovetail their work with the Governor's state trails initiative, "Michigan Trails at the Crossroads: A Vision for Connecting Michigan", since the two plans work very well together as well as coordinate with the Governor's State Trails Advisory Council.

MICHIGAN RECREATION AND PARKS ASSOCIATION TRAILS, GREENWAYS, BLUEWAYS, AND OPEN SPACE COMMITTEE

The Trails, Greenways, Blueways, and Open Space Committee was formed in 2006 under the Michigan Recreation and Parks Association umbrella. The Committee promotes a statewide network of trails, greenways, and water trails and also works to enhance the movement of trail advancement nationally and statewide to the trail community. Recreation opportunities are also promoted to enhance quality of life, influencing landscapes and diverse accessibility. The Committee organized and held a day-long training and information sharing session as a precursor to the annual MRPA State Conference (held in Traverse City in 2008). The session was attended by more than 100 people and included such topics as legal liability, trail technology, programming, and maintenance.

PROMOTING ACTIVE COMMUNITIES PROGRAM

Sponsored by the Michigan Department of Community Health, the Governor's Council on Physical Fitness, Sports and Health, Michigan State University, and the Prevention Research Center of Michigan, the Promoting Active Communities program is an online assessment and award system. Communities can use the online self-assessment to evaluate their built environments, policies, and programs related to promoting and supporting physical activity.



Michigan communities that complete the assessment are eligible for an award that recognizes them as an innovative Michigan community that is making it easier for their citizens to lead an active lifestyle. The program is part of a state initiative on physical activity to help Michigan communities make changes to their policies, promotion strategies, and the physical design of their communities to make it easier for residents to be physically active. In order to help communities move toward becoming more active, a guidebook was created entitled "Design Guidelines for Active Michigan Communities: Imagining, Creating, and Improving Communities for Physical Activity, Active Living, and Recreation".

COMMUNITY FOUNDATION FOR SOUTHEAST MICHIGAN REGIONAL GREENWAYS VISION

Over the past several years, the cities, counties, neighborhoods and community groups of southeastern Michigan have come together in unprecedented ways to create a network of greenways serving local areas as well as the region. These non-motorized routes are linking neighborhoods to schools, communities to cultural centers, and people to people. The benefits include new opportunities for recreation, fitness, economic development and neighborhood enhancement. Most recently, in 2006, the 7-county region that makes up Southeast Michigan got together to develop an updated Southeast Michigan Greenways Vision which also reflects the desired non-motorized connections in the Oakland County area. Counties worked together with each other and with local municipalities and interested stakeholders to develop a long-term vision for a connected system of greenways and non-motorized accommodations.

The Regional Trails and Greenways Vision for Oakland County was produced by utilizing the Oak Routes maps and information as a starting point and then holding several local and regional workshops to gather input and updates. The Greenways Vision for Oakland County reflects the desires of the workshop participants and represents various opportunities to provide connections to the major destinations within and around Oakland County and the region.

MDOT NON-MOTORIZED COMMITTEE

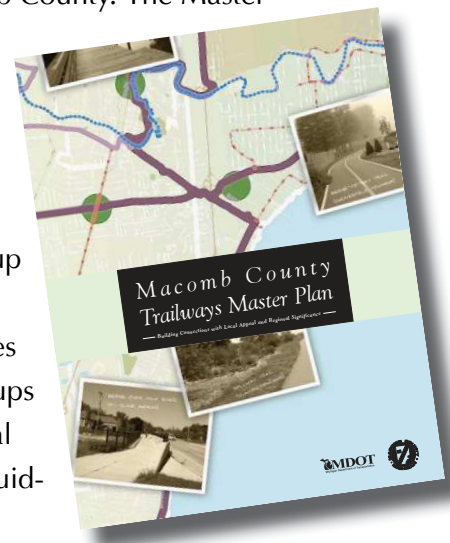
The Michigan Department of Transportation's (MDOT's) Metro Region Office, which serves Wayne, Oakland, Macomb and St. Clair counties, formed the Metro Region Non-motorized Advisory Committee in early 2005. The com-

mittee's mission is "to advance the planning, funding, construction, maintenance and usage of non-motorized transportation facilities." A major goal of the group is to create linkages and connections within the regional trail network by coordinating non-motorized plans with region-wide road planning and project scoping.

The committee, which meets quarterly, includes recreation and transportation representatives from each of the Metro Region counties and the City of Detroit, several non-motorized advocacy groups, and MDOT staff. Among the achievements of the committee are guidance in preparing a non-motorized transportation plan for St. Clair County and assistance in studying, rehabilitating and maintaining the I-275 Bike Path, which the committee considers to be the "spine" of the area trail network.

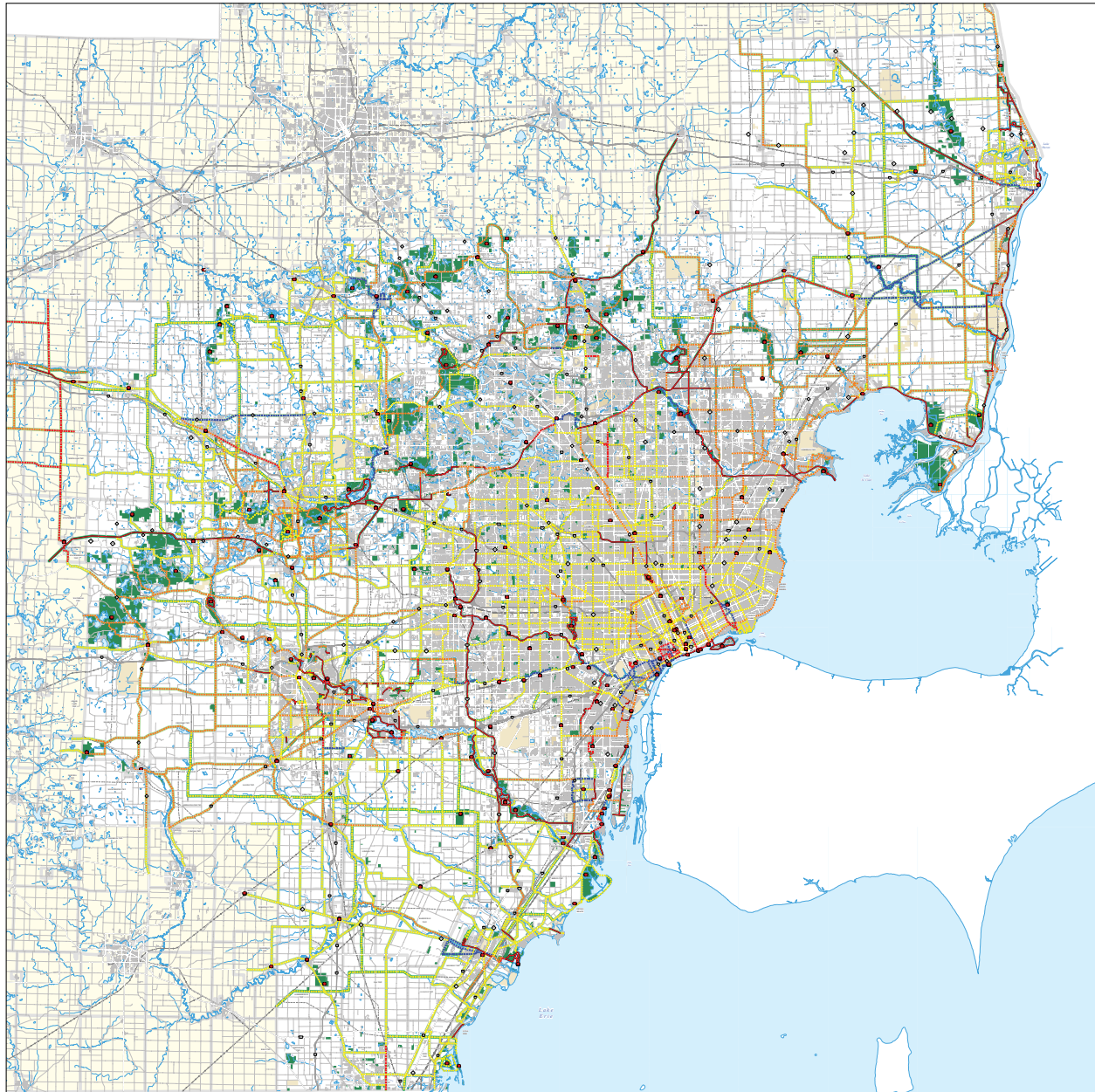
MACOMB COUNTY TRAILWAYS MASTER PLAN

The Macomb County Planning & Economic Development Department completed a County-wide Trailways Master Plan in 2004. The County worked closely with local, regional and state agencies to develop a plan that presented a unified and coordinated vision for non-motorized transportation planning and development in Macomb County. The Master Plan serves as a guide to trail planning, design and construction. A stakeholder group consisting of multiple agencies and interest groups developed a goal statement and guid-



R

EGIONAL TRAILS AND GREENWAYS (CFSEM)



Regional Trails and Greenways Vision



Made possible through financial support provided by The Community Foundation for Southeastern Michigan's GreenWays Initiative

Greenway System Legend:

A greenway system is comprised of three basic parts: links, hubs and nodes.

- Greenway Links**
Links are the backbone of the greenway system. They are the most corridors for people.
- Type of Link**
 - Off-Road Corridor
 - Enhanced Natural Corridor (Dikes, Levees & Subaquatic)
- Status of Link**
 - Existing or Nearing Completion
 - Under Development
 - Detailed Design / Study Underway
 - Planned (Included in a Report)
 - Preliminary Concept

Greenway Hubs

Hubs are the anchors of the system, such as transit stations and major cultural attractions.

- Regional Hub
- School
- Parks and Open Space

Greenway Nodes

Nodes are smaller facilities that hubs that serve as points of interest and frequent destinations.

- School
- Parks and Open Space

Legend for Other Symbols

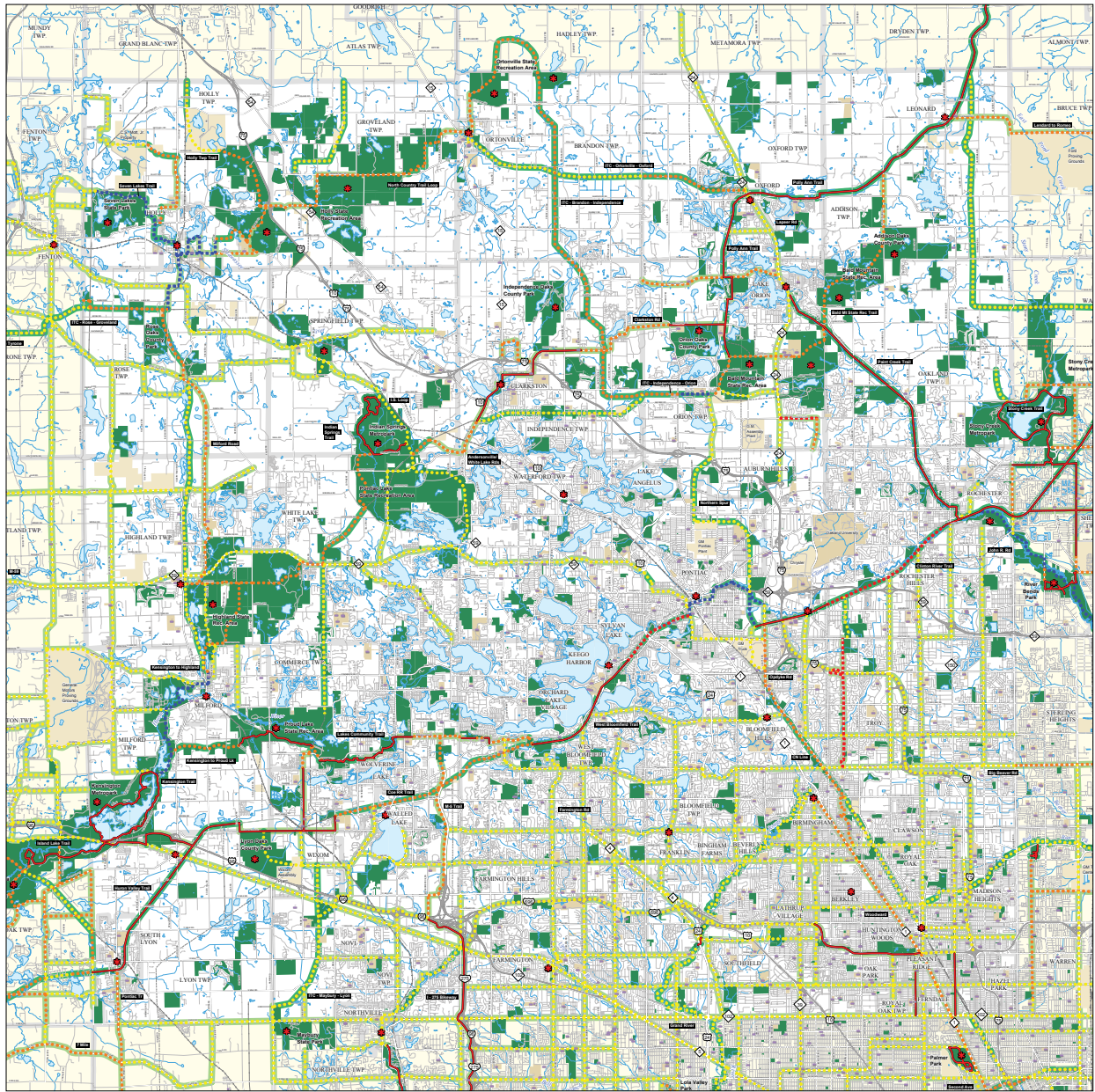
- City, Village and Township Boundaries
- Water
- School Properties
- Selected Large Private Properties
- Primary Road
- Local Road
- Railroad
- Power Transmission Line - Existing
- Power Transmission Line - TIC Change



A scale bar between 10 and 20 miles for use with a 1:50,000 scale map not intended for display.

Prepared by The UrbanSpace Collaborative, LLC
October, 2011
November 17, 2011

REGIONAL TRAILS AND GREENWAYS - OAKLAND COUNTY (CFSEM)



Environmental Stewardship Program
 Planning & Economic Development Services

Made possible through financial support provided by
 The Community Foundation for Southeastern Michigan's
 GreenWay Initiative

Greenway System Legend:
A greenway consists of a combination of these items: parks, trails, and sites.

Greenway Links
Links are the heart of the greenway system. They are the trail connections for people.

Type of Link:

- Off-Road Corridor
- Roadway-Based Corridor (Bike Lanes & Sidewalks or Separators)

Status of Link:

- Existing or Near-Term Completion
- Local Development
- Outdated Design / Study Undertaken
- Planned (Included in a Report)
- Preliminary Concept

Greenway Hubs
Hubs are the anchors of the system, such as major parks and major cultural attractions.

Greenway Sites
Sites are smaller features than hubs that serve as points of interest and frequent destinations.

- Schools
- Parks and Open Space

Legend for Other Symbols

- City, Village and Township Boundaries
- Water
- School Properties
- Selected Open Private Properties
- Freeway
- Primary Road
- Local Road
- Railroad
- Power Transmission Line - Examined
- Power Transmission Line - ITC Cleared

Scale: 1 inch = 1 mile
 0 0.5 1 Miles

State boundaries in red. All 20 counties in red and a 1/4 degree to 1/2 degree resolution.

Prepared by:

 November 17, 2010

ing principles for the project, communicated the trail efforts occurring at the local level, and discussed issues regarding potential routes and connections. The Master Plan included trail connections to Oakland County along the Red Run Drain, Macomb Orchard Trail and a connection to the Polly Ann Trail through Bruce Township. The development of the Master Plan also included public forums to gather additional comments and input. Macomb County is currently in the process (2008) of updating the County Trailways Master Plan to illustrate new sections of constructed trail, as well as revised routes, destinations and priorities.

DETROIT NON-MOTORIZED URBAN TRANSPORTATION MASTER PLAN

The City of Detroit prepared and adopted a non-motorized master plan in 2006 that outlines the locations and types of non-motorized facilities recommended for the City. The proposed system consists of a comprehensive network of functional routes classified as: Regional Connectors; City Connectors; Neighborhood Connectors; Downtown-Midtown Connectors; and City Loops. Each route is proposed to consist of a recommended facility type, including: Bike Paths; Bike Lanes; Blue Bike Lanes (blue surfaced); Shared Parking Lanes and Shared Curb Lanes.

The Regional Connector routes follow selected state trunklines within Detroit and are recommended to take the form of bike lanes. The City Connector routes are identified along selected arterial streets and are to be designed as shared parking lanes or shared curb lanes. The Neighborhood Connector routes are envisioned as shared parking lanes or shared curb lanes along important inter-connecting neighborhood streets. Blue bike lanes are recommended along the Downtown-Midtown Connector routes,

which follow important streets in the midtown and downtown districts of the city. City Loop routes are identified along scenic streets and are predominantly designed to accommodate bike lanes.

The Master Plan takes into consideration existing and planned regional non-motorized systems and the systems of adjacent communities. Along the Detroit/Oakland County border, 8 Mile Road is designated as a Regional Connector route and a number of non-motorized connection points are also identified. A major proposed non-motorized connection point is designated at Woodward Avenue, which is a proposed Regional Connector route.

OAKLAND EQUESTRIAN COALITION

The Oakland Equestrian Coalition was founded in early 2003. It is an advocacy group representing the varied equestrian interests in Oakland County. Members have interests in farming, trail riding, breeding, showing, 4-H horse activities, equestrian teams, boarding farms, and equestrian facilities. The Oakland Equestrian Coalition represents equestrians of all ages. The vision for the Oakland Equestrian Coalition is to:

- Educate Oakland County governmental units and citizens about equestrian concerns in Oakland County.
- Promote growth of equestrian activities in Oakland County.
- Preserve existing equestrian facilities and trails in Oakland County.
- Develop new equestrian opportunities in Oakland County, including access to the entire Oakland County Greenways system of multi-use trails.



MICHIGAN EQUINE SURVEY - 2007

An Equine Survey was conducted in 2007 by the USDA, NASS, Michigan Field Office in order to update the last major equine survey which was completed in 1996. The estimate of equine in Michigan as of June 2007 was 155,000, an increase of 25,000 (19.2% increase) from 1996. Excluding wages and salaries to hired workers, operators and owners incurred over \$800 million of equine-related expenditures in 2006 including costs for feed, fuel, health care, transportation, equipment, tack, boarding, bedding, breeding, show and race entry fees, and taxes. **The Equine Survey illustrated that Oakland County contains the largest number of horses (at 6,900) than any other county in the state.**

Top Equine Inventory Counties (June 2007)

Oakland	6,900
Washtenaw	6,300
Livingston	5,900
Jackson	5,700
Hillsdale	5,500
Lapeer	5,100
<i>Six County Total</i>	<i>35,400</i>

These six counties accounted for almost a quarter of the equine in the State of Michigan.

Equine: Trail and Pleasure Riding Locations Used

Location	Owners (%)
Parks or recreation areas	23
State or national forests	14
Wildlife management areas	6
Public roads	36
Private land	53
Other	6
Do not ride	41



2.2 MAJOR OAKLAND COUNTY SYSTEMS

Oakland County, the Oakland Trails Advisory Council, numerous agencies, and Friends Groups have worked together to implement 8 major trail systems that, when complete, will crisscross Oakland County and connect into adjacent counties and regions. The 8 major trail systems that comprise the primary spine of the emerging non-motorized network are described in further detail on the following pages.

I-275 BIKE PATH

Constructed in the 1970's, the I-275 Bike Path is located within the right-of-way of MDOT's I-275 freeway. Over 42 miles in length, this regional trail traverses through eleven communities within three counties, including the Cities of Novi and Farmington Hills within Oakland County. The segment of the trail located within Oakland County is approximately 4.1 miles in length. Along its route, the path provides access to numerous destinations including Wayne County's Hines Park, several Metroparks, neighborhoods, commercial, office, and entertainment venues, as well as local parks and natural resources. Until recently, the bike path, however, has received little attention in terms of maintenance and rehabilitation since construction. Renewed interest in connected trail corridors and transportation alternatives has breathed life into the deteriorating trail system.

In 2006, the Michigan Trails and Greenways Alliance (MTGA) (former Rails-to-Trails Conservancy Michigan Chapter), in conjunction with the League of Michigan Bicyclists, and with funding from the GreenWays Initiative of the Community Foundation for Southeast Michigan, published a study of the I-275 Bike Path in Oakland, Wayne, and Monroe counties. The 2006 Study consisted of two phases:

- 1) Consultation with individual communities on the feasibility of making connections to the bike path, and their overall impression of it; and,
- 2) Forming an organized structure to provide for coordinated communication between communities and MDOT for the long-term sustainability of the bike path.

The vision for the I-275 Bike Path by the various user groups is to rehabilitate the trail so that it can serve as a premier trail system and the main spine connecting all of the other non-motorized efforts moving forward in the region and state.

The MTGA efforts and report led to the Michigan Department of Transportation conducting and funding an Asset Management Study of the 42-mile trail system. The MDOT Study began in 2007 and will be completed in 2008. The Study includes a comprehensive analysis addressing how to best rehabilitate and manage the existing bike path within the I-275 Corridor,

Reviving the I-275 Bikeway: The Potential for Community Enhancement



An Interim Report
March, 2006

Michigan Trails and Greenways Alliance

9/7/2006

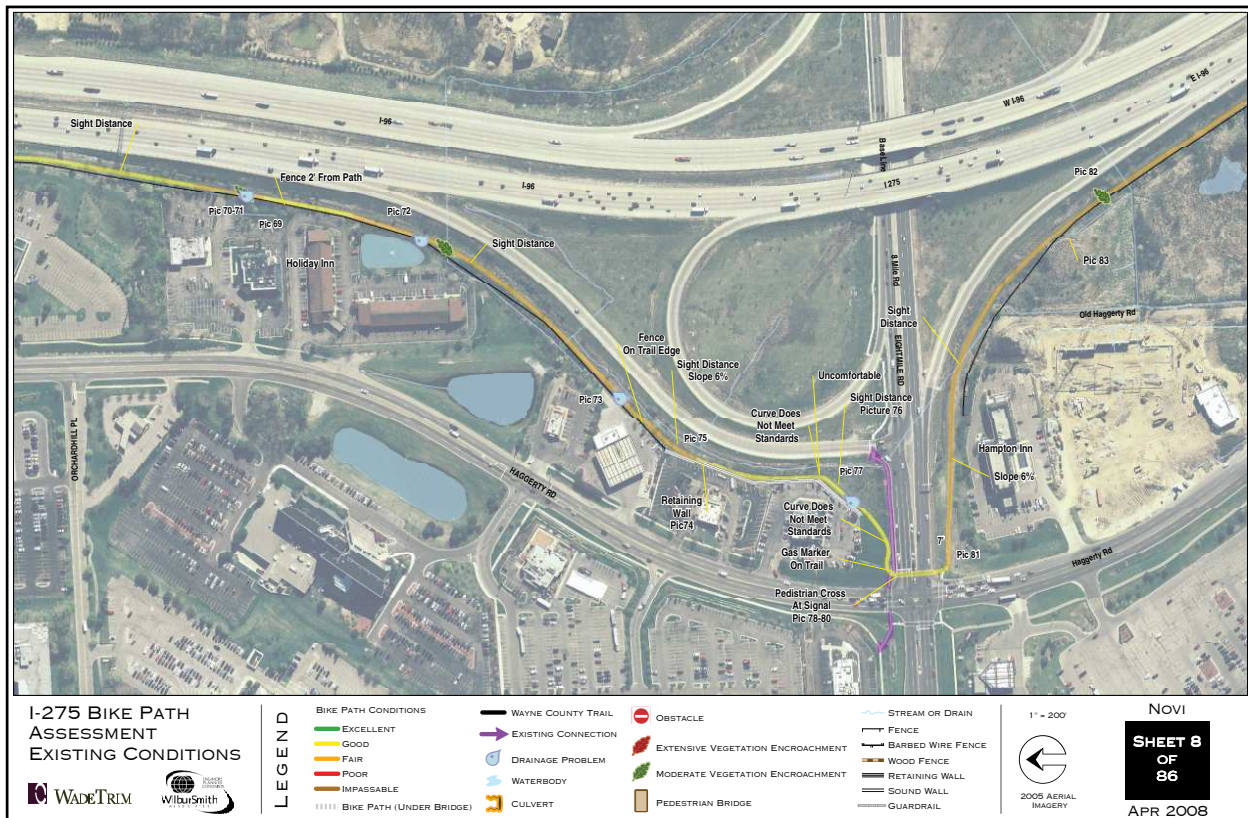
as well as determine the feasibility of expanding the trail to the south into the City of Monroe.

The Asset Management Study includes a detailed inventory of the existing system utilizing GPS and GIS technologies to document pavement condition, vegetation overgrowth, bridge locations, trail width, ADA accessibility and user safety concerns. The inventory also includes a field examination of road crossings and assessment of pedestrian bridge conditions. Several public meetings were held during the project period with user groups and local communities along the corridor. The results of the existing conditions analysis and extension feasibility study were the basis for the development of recommendations and probable cost estimates related to the rehabilitation of the system.

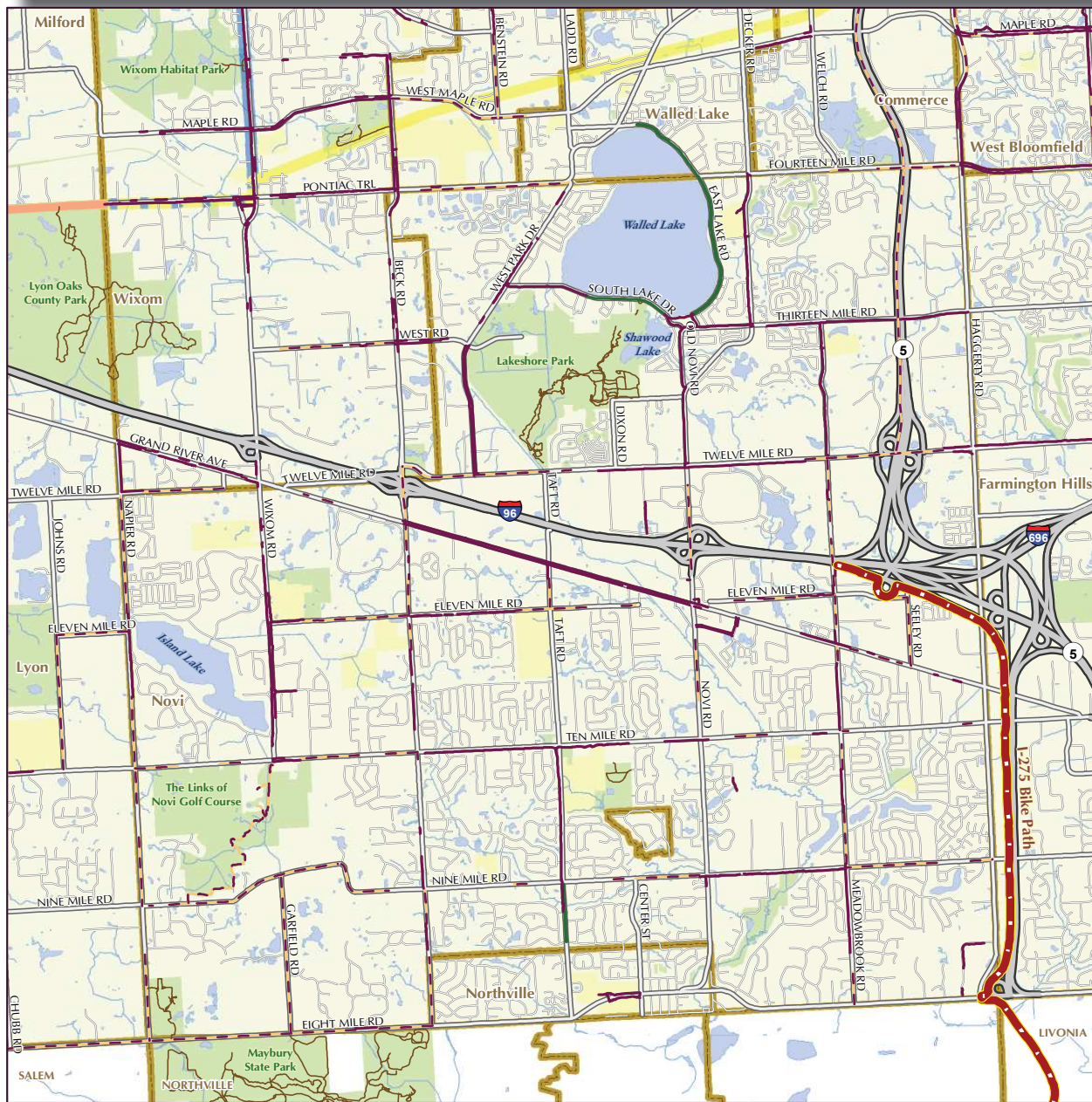
MDOT has committed to moving forward with a multi-year, multi-phase rehabilitation project of the I-275 Bike Path. They are also planning to design a trail extension from the I-275 path north along M-5 to Pontiac Trail Road (slated for 2008/2009).

POLLY ANN TRAIL

The Polly Ann Trail uses the abandoned P.O. & N. railroad corridor. This linear park traverses 12.2 miles through some of the most beautiful and untouched landscape in northern Oakland County. It begins in Orion Township at Joslyn and Indianwood Roads and continues northeast through Oxford and Leonard to the Oakland/Lapeer County line at Bordman Road. The trail connects the communities of Orion Township, Oxford Township, the Village of Oxford, Addison Township, and the Village of Leonard. The trail is open to walking, hiking, jogging, cycling, horseback riding, and cross country skiing. With significant federal and



I 275 BIKE PATH



Legend	I-275 Bike Path	Municipal Boundary
Proposed Trail-to-Trail Connector Routes:	Trail	Lakes & Ponds
Yellow & Blue Route	Safety/Side Path	Rivers & Streams
Yellow Route	Route	Recreation Land
Blue Route	Bike Lane	School
	Water Trail	
	Park Path	
	Proposed Pathway	

June 2008

Sources:
 Roads: Oakland County GIS, 2008
 Trail Network: Oakland County GIS, 2008
 Recreation Lands: Oakland County GIS, 2008

AKLAND COUNTY
TRAILS MASTER PLAN

state funding, the railroad corridor was purchased for use as a trail in 1997 and 1999. The trail is owned by the Michigan Department of Natural Resources and managed by the Polly Ann Trailway Management Council, Inc. The Council is a nonprofit, intergovernmental entity that meets on a monthly basis and consists of representatives from Orion Township, Oxford Township, Village of Leonard, and the Village of Oxford. The Council receives staff assistance from a Trail Manager.

The state-owned segment of the Lapeer County Polly Ann Trail is approximately 20 miles long and is managed by Lapeer County. The Lapeer County section traverses from Bordman Road to Kings Mill, passing through Dryden, Imlay City, and Lum.

PAINT CREEK TRAIL

The 8.9-mile Paint Creek Trail follows the old Penn Central Railroad and connects the Cities of Rochester and Rochester Hills, Village of Lake Orion, and Oakland and Orion Townships. The trail also connects into the Clinton River Trail and Macomb Orchard Trail via the Downtown Rochester River Walk with plans to connect to the Polly Ann Trail. The Paint Creek Trail was the first rail trail project in the State of Michigan and opened in 1990. The trail is managed by the Paint Creek Trailways Commission established through an intergovernmental agreement between the four communities of Rochester, Rochester Hills, Oakland Township and Orion Township. The members share expenses of the annual operating budget, including a Trail Manager, and are responsible for maintenance on the segment of trail within their boundaries.



POLLY ANN AND PAINT CREEK TRAILS

The Polly Ann Trail uses the abandoned P.O. & N railroad corridor and traverses 12.2 miles through northern Oakland County. The Paint Creek Trail was the first rail-trail in Michigan, is 8.9 miles and connects the communities of Rochester, Rochester Hills, Village of Lake Orion, Oakland and Orion Townships.

POLLY ANN TRAIL



Legend

Proposed Trail-to-Trail Connector Routes:

- Yellow Route
- Purple Route
- Blue Route
- Green Route

- Polly Ann Trail
- Trail
- Safety/Side Path
- Route
- Bike Lane
- Water Trail
- Park Path
- Proposed Pathway

- Municipal Boundary
- Lakes & Ponds
- Rivers & Streams
- Recreation Land
- School

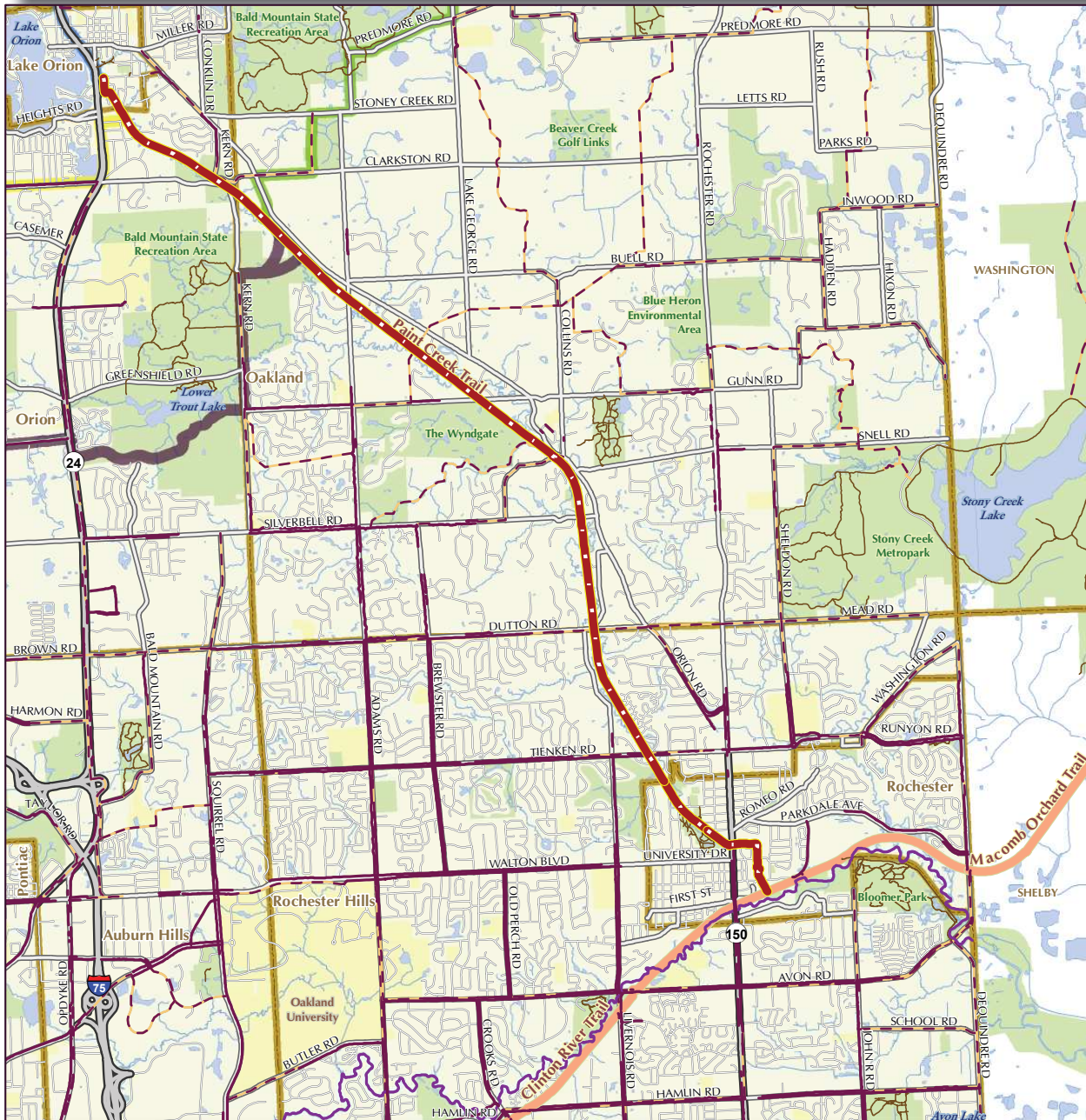
June 2008



Sources
 Roads: Oakland County GIS, 2008
 Trail Network: Oakland County GIS, 2008
 Recreation Lands: Oakland County GIS, 2008



P AINT CREEK TRAIL



Legend

Proposed Trail-to-Trail Connector Routes:

- Yellow Route
- Purple Route
- Blue Route
- Green Route

- Paint Creek Trail
- Trail
- Safety/Side Path
- Route
- Bike Lane
- Water Trail
- Park Path
- Proposed Pathway

- Municipal Boundary
- Lakes & Ponds
- Rivers & Streams
- Recreation Land
- School

June 2008



0 0.25 0.5 0.75 1
Miles

Sources
 Roads: Oakland County GIS, 2008
 Trail Network: Oakland County GIS, 2008
 Recreation Lands: Oakland County GIS, 2008

OAKLAND COUNTY TRAILS MASTER PLAN

CLINTON RIVER TRAIL

The Clinton River Trail is a 16-mile trail within an abandoned rail line traversing through the heart of Oakland County, including the cities of Sylvan Lake, Pontiac, Auburn Hills, Rochester Hills and Rochester. It connects with the existing West Bloomfield Trail to the west, the Macomb Orchard Trail to the east, and Paint Creek Trail to the north. The Grand Trunk Railroad (originally called the Michigan Air Line) established the rail corridor in 1879. In 1998, when the railroad divested this portion of the rail road, the City of Auburn Hills purchased a 2-mile section which was the catalyst for the formation of the Friends of the Clinton River Trail group and future acquisitions of the property for use as a public trail. Each community manages/maintains their own portion of the trail, while the Clinton River Trail Alliance (comprised of representatives from each community) meets monthly to plan and coordinate trail activities.

WEST BLOOMFIELD TRAIL

The West Bloomfield Trail is a 4.25 mile rail-to-trail project that traverses through West Bloomfield, Orchard Lake, Keego Harbor and Sylvan Lake. The West Bloomfield Woods Nature Preserve is the west trailhead and Sylvan Manor Park is the east trailhead. Sylvan Manor Park also serves as the trailhead for the Clinton River Trail, enabling West Bloomfield Trail users to continue northeast toward Pontiac. Along the trail, 21 nature interpretive sites give visitors the opportunity to see various habitats without putting undue pressure on the ecosystems and sensitive wildlife species.

LAKES COMMUNITY TRAIL

The Lakes Community Trail is located between the West Bloomfield Trail and the Huron Valley

Trail. The trail is 3.2 miles long and runs east to west through the City of Wixom, Village of Wolverine, and Commerce Township. The trail connects several parks and green spaces together such as Clara Miller Park, Maple Glen



CLINTON RIVER TRAIL

The 16-mile rail trail passes through Sylvan Lake, Pontiac, Auburn Hills, Rochester Hills and Rochester. The trail connects to the West Bloomfield Trail to the west, the Macomb Orchard Trail to the east, and the Paint Creek Trail to the north.

Park, Hickory Glen Park, Gilbert Willis Park, and Proud Lake State Park. The asphalt trail was constructed in the early 2000's and varies between 6 and 8 feet wide. Each community maintains the portion of the trail within their jurisdiction. Many of the local Safety Path systems connect into the Lakes Community Trail.

HURON VALLEY TRAIL

The Huron Valley Trail is a network of trails utilizing the former railroad corridor connecting the cities of Wixom and South Lyon. It begins at Lyon Oaks County Park, accessible from Pontiac Trail, and follows the former "Airline Railroad" corridor westward through Milford Township. At I-96 a connector trail heads west toward Kensington Metropark and Island Lake State Recreation Area. The trail to South Lyon is relatively flat with very gentle grades while the trail to Kensington/Island Lake offers some challenging hills. A unique boardwalk under I-96 provides access from Island Lake Recreation Area to Kensington Metropark.

HEADWATERS TRAILS

In northwest Oakland County, the Townships of Groveland, Holly, Rose and Springfield and the Village of Holly are continuing to explore options for the Headwaters Trails. The Headwaters Trails will be an interconnected trail system providing recreation and fitness opportunities from Holly to Rose Oaks to Seven Lakes State Park. Headwaters Trails Inc. is a non-profit 501(c)(3) organization dedicated to the construction of a trail network in the Headwaters region. The Headwaters Trails system includes 4 proposed trail routes/segments:

- *Top of the Shiawassee River Water Heritage Trail*
The Top of the Shiawassee River Water Heritage Trail is a shallow river starting from the



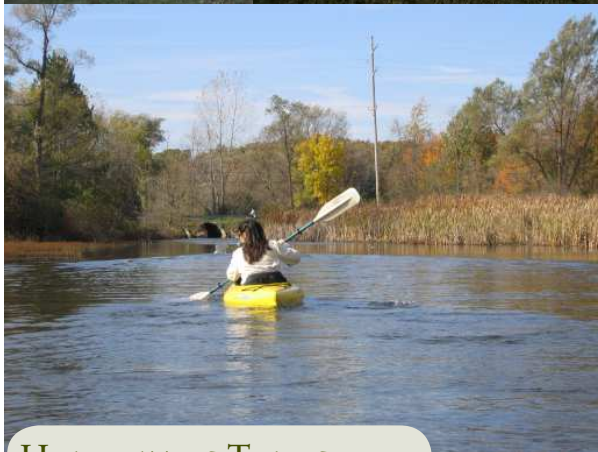
WEST BLOOMFIELD TRAIL

The West Bloomfield Nature Preserve anchors the western end of the 4.25 mile West Bloomfield Trail.

old water works building in the Village of Holly and traveling seven river miles downstream through an unspoiled natural landscape to Strom Park in the City of Fenton. Great Blue Herons, Kingfishers and Sandhill cranes can be seen on most trips down the river.

- *Village-Township Connector*
This 4.3-mile segment of the Headwaters Trail system is proposed to traverse from the Village of Holly to Holly Township and provide a connection to various destinations including WaterWorks Park, downtown historic Holly, as well as five parks that will be connected by the trail.

- *Seven Lakes Park Connector*
The Seven Lakes State Park Connector segment will connect the Village of Holly with the Seven Lakes State Park. From downtown historic Holly traveling west, the path will follow along village streets and end at the entrance of Seven Lakes State Park.
- *Rose Oaks Connector*
The Rose Oaks Connector segment of the Headwaters Trail system will connect the Village of Holly to Camp Has-O-Rec on the border of Rose Oaks County Park. Rose Oaks is a 260 acre passive use County park. The nineteen acres of the former school camp Has-O-Rec would be able to serve as a trailhead and staging area.



HEADWATERS TRAILS

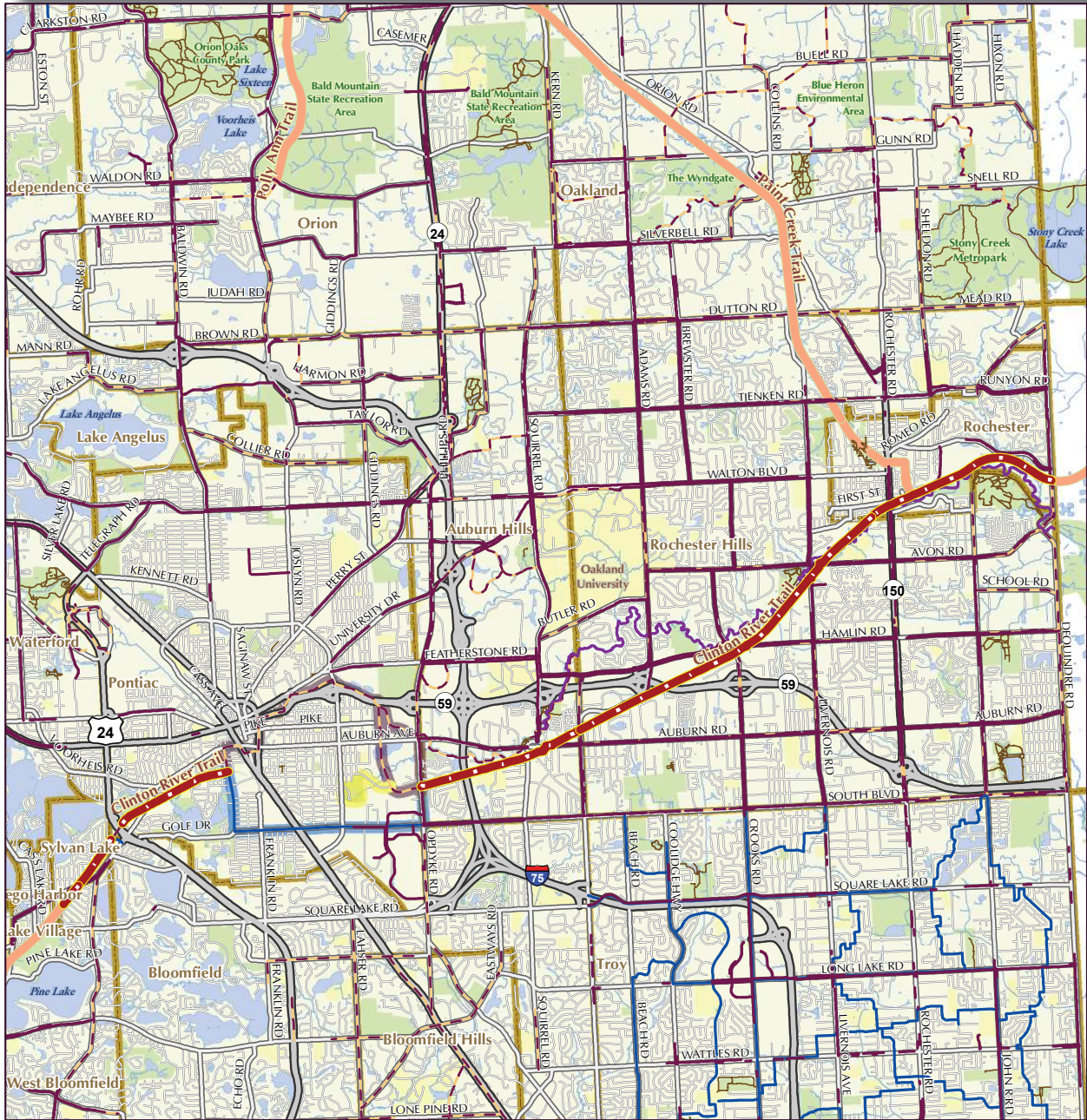
The Headwaters Trails system encompasses 4 connected segments including the Shiawassee River Water Heritage Trail, the Village-Township Connector, Seven Lakes Park Connector, and the Rose Oaks Connector.



HURON VALLEY AND LAKES COMMUNITY TRAILS

The 3.2-mile Lakes Community Trail was built in the early 2000's within Wixom, Village of Wolverine, and Commerce Township. The Huron Valley Trail leads from the Orion Oaks County Park, through Wixom, Milford, and into Lyon and South Lyon. The Huron Valley Trail also connects into Kensington Metropark and Island Lake State Recreation Area.

CLINTON RIVER TRAIL



Legend

Proposed Trail-to-Trail Connector Routes:

- Murphy Park Spur
- Purple Route
- Blue Route

- Clinton River Trail
- Trail
- Safety/Side Path
- Route
- Bike Lane
- Water Trail
- Park Path
- Proposed Pathway

- Municipal Boundary
- Lakes & Ponds
- Rivers & Streams
- Recreation Land
- School

June 2008



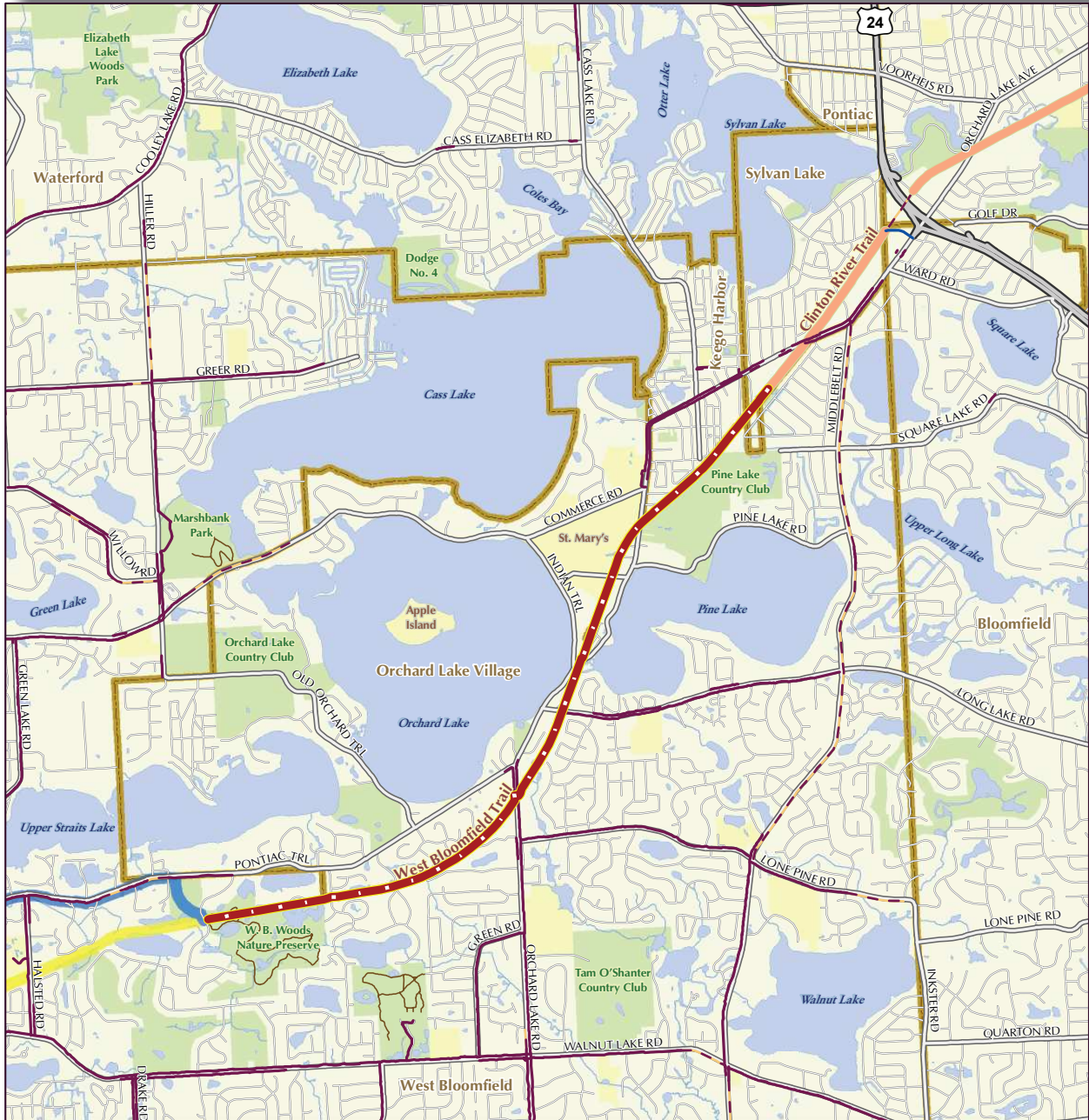
0 0.250.50.75 1 Miles

Sources
 Roads: Oakland County GIS, 2008
 Trail Network: Oakland County GIS, 2008
 Recreation Lands: Oakland County GIS, 2008



OAKLAND COUNTY
TRAILS MASTER PLAN

WEST BLOOMFIELD TRAIL



Legend

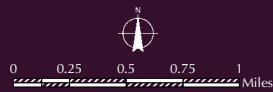
Proposed Trail-to-Trail Connector Routes:

- Yellow Route
- Blue Route

- West Bloomfield Trail
- Trail
- Safety/Side Path
- Route
- Bike Lane
- Water Trail
- Park Path
- Proposed Pathway

- Municipal Boundary
- Lakes & Ponds
- Rivers & Streams
- Recreation Land
- School

June 2008



Sources
 Roads: Oakland County GIS, 2008
 Trail Network: Oakland County GIS, 2008
 Recreation Lands: Oakland County GIS, 2008

AKLAND COUNTY
TRAILS MASTER PLAN

LAKES COMMUNITY TRAIL



Legend

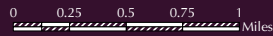
Proposed Trail-to-Trail Connector Routes:

- Yellow Route
- Blue Route

- Lakes Community Trail
- Trail
- Safety/Side Path
- Route
- Bike Lane
- Water Trail
- Park Path
- Proposed Pathway

- Municipal Boundary
- Lakes & Ponds
- Rivers & Streams
- Recreation Land
- School
- Railroad

June 2008



Sources:
 Roads: Oakland County GIS, 2008
 Trail Network: Oakland County GIS, 2008
 Recreation Lands: Oakland County GIS, 2008



OAKLAND COUNTY
TRAILS MASTER PLAN

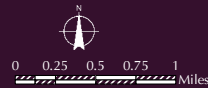
HURON VALLEY TRAIL



Legend

- | | | |
|---|---|---|
| <ul style="list-style-type: none"> Proposed Trail-to-Trail Connector Routes: Yellow & Blue Route Yellow Route Blue Route | <ul style="list-style-type: none"> Huron Valley Trail Trail Safety/Side Path Route Bike Lane Water Trail Park Path Proposed Pathway | <ul style="list-style-type: none"> Municipal Boundary Lakes & Ponds Rivers & Streams Recreation Land School |
|---|---|---|

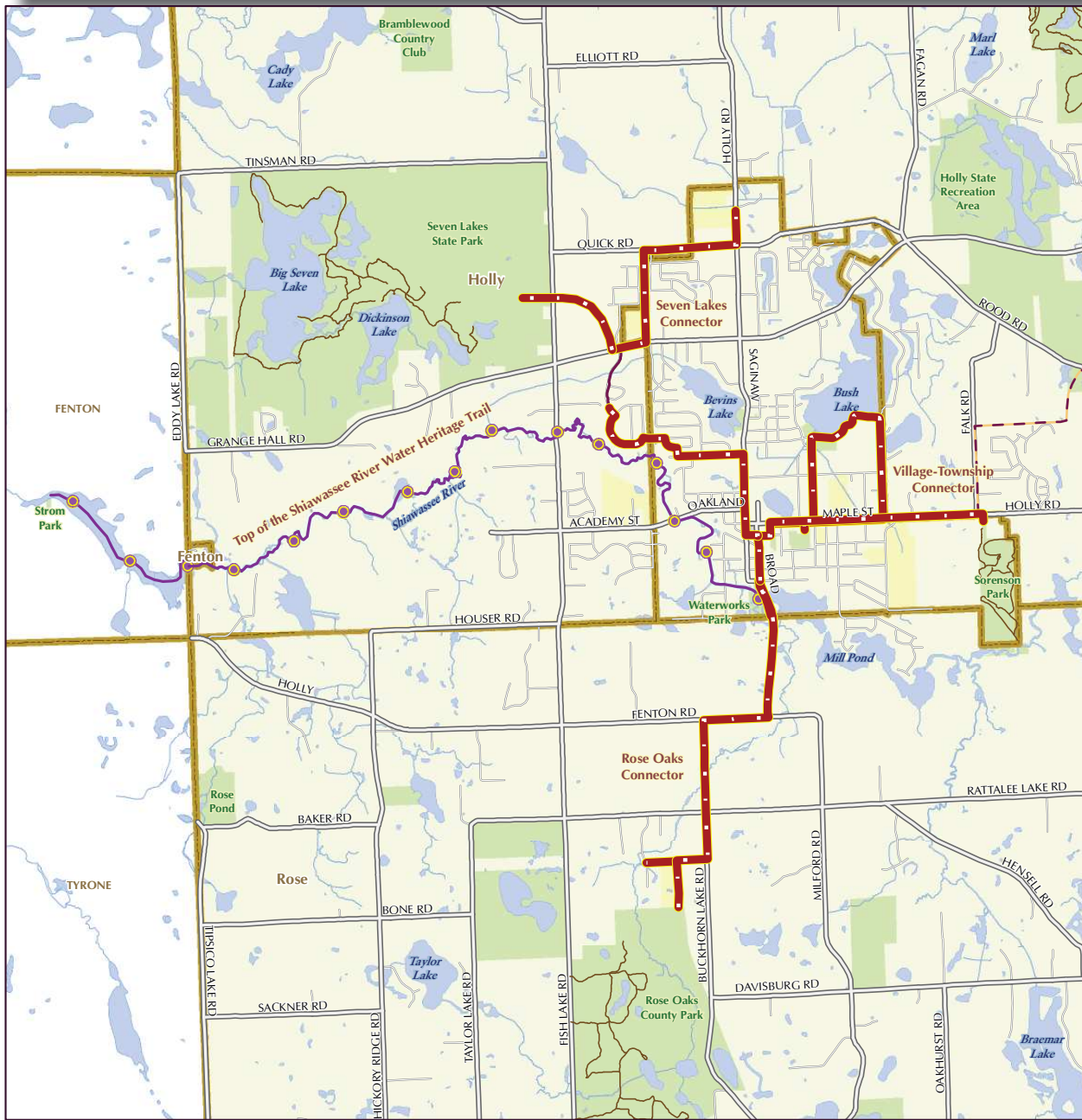
June 2008



Sources
 Roads: Oakland County GIS, 2008
 Trail Network: Oakland County GIS, 2008
 Recreation Lands: Oakland County GIS, 2008



HEADWATERS TRAILS



Legend

Proposed Trail-to-Trail Connector Routes:

Headwaters Trails

- Proposed Headwaters Trails
- Trail
- Safety/Side Path
- Route
- Bike Lane
- Park Path
- Top of the Shiawassee River Water Heritage Trail
- Proposed Pathway

- Municipal Boundary
- Lakes & Ponds
- Rivers & Streams
- Recreation Land
- School

June 2008



0 0.25 0.5 0.75 1 Miles

Sources:
 Roads: Oakland County GIS, 2008
 Trail Network: Oakland County GIS, 2008
 Recreation Lands: Oakland County GIS, 2008



AKLAND COUNTY
TRAILS MASTER PLAN



Major Oakland County Trail Systems

Trail Name	Width	Surface	Length	Year Established
I-275 Bike Path	6-10'	Asphalt	4.1 miles (+38 miles in Wayne & Monroe Counties)	1970's
Polly Ann Trail	12'	Asphalt Crushed Aggregate	14.2 miles (+ 20 miles in Lapeer Co)	1997
Paint Creek Trail	8'	Asphalt Crushed Limestone	8.9 miles	1990
Clinton River Trail	10'	Asphalt Crushed Limestone Recycled Asphalt	16 miles	2003
West Bloomfield Trail	8'	Crushed Limestone	4.25 miles	1991
Lakes Community Trail	6-8'	Asphalt	3.2 miles	Early 00's
Huron Valley Trail	10'	Asphalt	10.5 miles	2003
Headwaters Trails		Water Trail Land Trails	7 miles (Proposed)	

EQUESTRIAN TRAILS

As documented in previous sections of this Master Plan, Oakland County has the greatest number of equine in the State of Michigan. The equestrian community and various trail rider groups and associations actively coordinate and promote the needs of the equestrian community with local communities, the County, land management agencies, and OTAC.

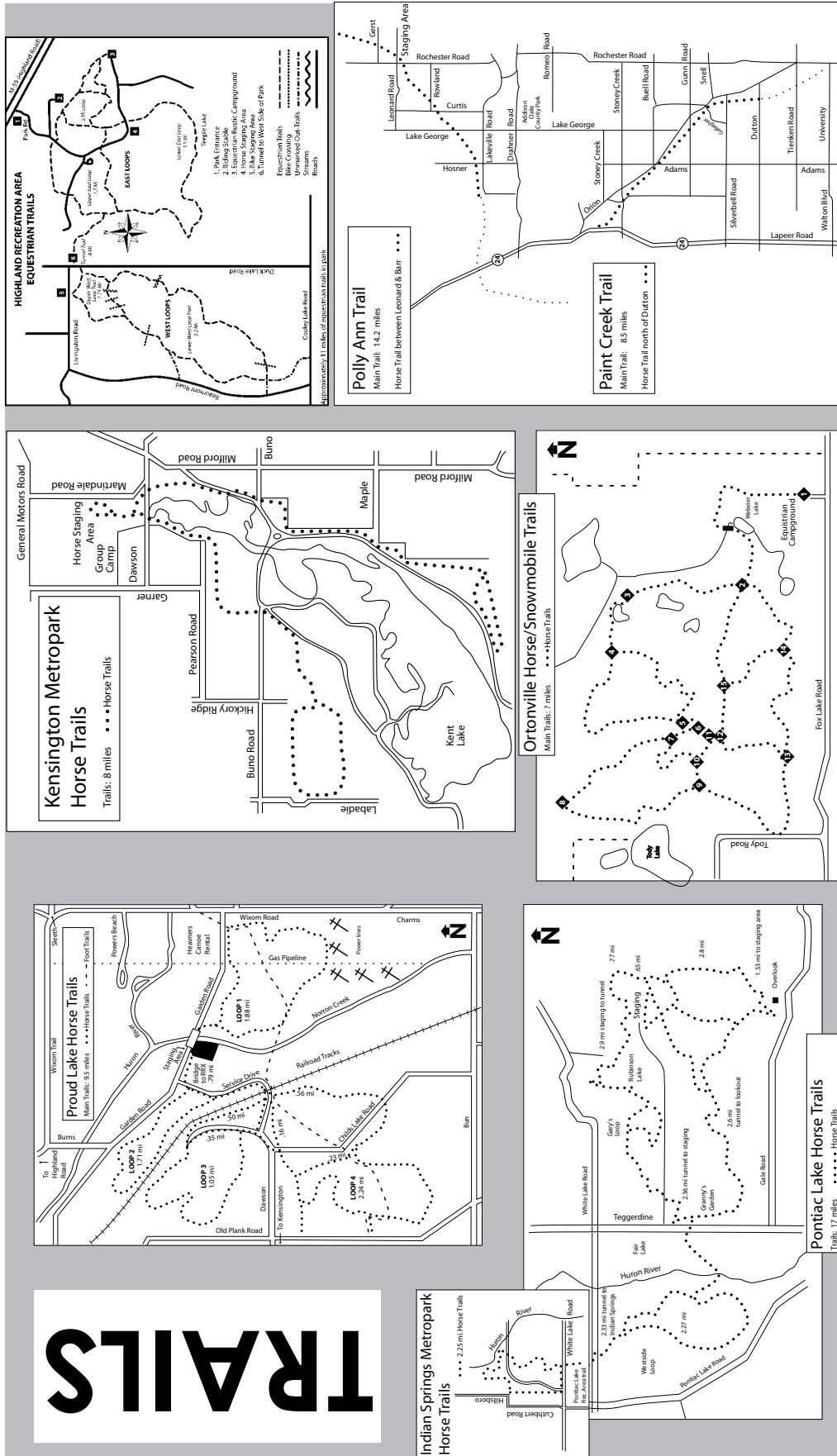
As is illustrated on the map on the following page, there are currently approximately 74

miles of public equestrian trails in Oakland County including trails at: Addison Oaks, Highland Oaks and Rose Oaks County Parks; Proud Lake and Highland Recreation Areas; Ortonville; Pontiac Lake; Indian Springs and Kensington Metroparks; Polly Ann Trail and the northern section of the Paint Creek Trail.

MOUNTAIN BIKE TRAILS

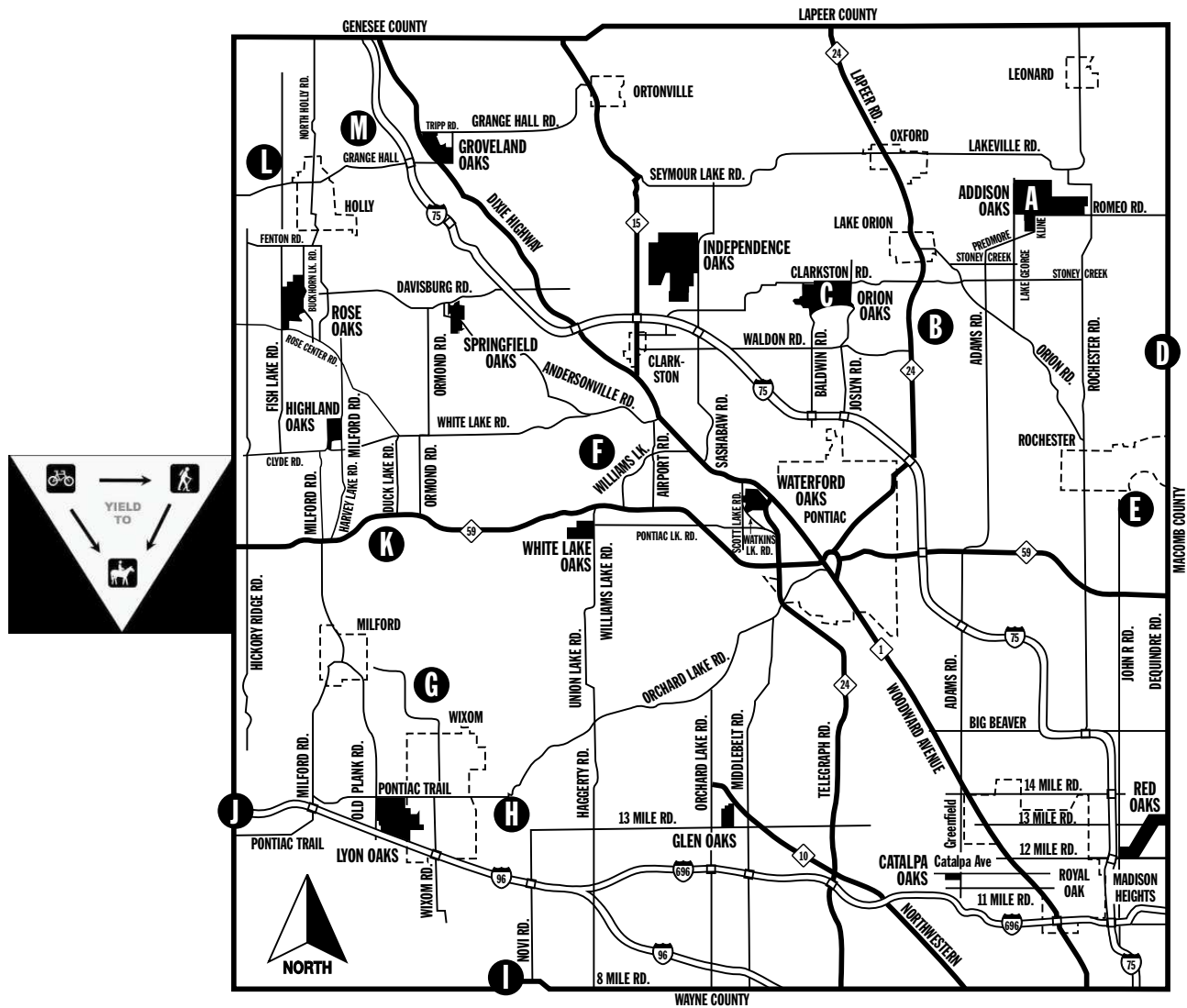
There are also approximately 134 miles of public mountain bike trails within Oakland County at various locations. The Michigan Mountain

Equestrian Trails in Oakland County



TRAILS

Mountain Bike Trails in Oakland County



Trail	City	Phone	Beg	Int	Adv	Camp	Trail miles
A	Addison Oaks	Leonard	248.693.2432	■	■	■	8
B	Bald Mountain	Lake Orion	248.693.6767	■	■		15
C	Orion Oaks	Orion Township	248.858.0906	■			10
D	Stony Creek	Shelby Township	810.781.4242	■	■		14
E	Bloomer	Rochester Hills	248.656.4753	■	■	■	8
F	Pontiac Lake	Waterford	248.666.1020	■	■	■	11
G	Hickory Glen	Commerce Township	248.926.0063	■	■		6.5
H	Lakeshore Park	Novi	248.347.0400	■	■	■	10
I	Maybury	Northville	248.349.8390	■	■		7
J	Island Lake	Brighton	248.229.7067	■	■		13
K	Highland State Rec	White Lake	248.685.2433		■	■	16
L	Seven Lakes	Fenton	248.634.7271	■		■	5
M	Holdridge	Holly	248.634.1758	■	■	■	31



OAKLAND COUNTY EQUESTRIAN TRAIL GROUPS:

- Oakland Equestrian Coalition
- Highland Equestrian Conservancy
- Addison Oaks Trail Riders
- Pinckney Trail Riders Association
- Pontiac Lake Horseman's Association
- Highland Trail Riders
- Proud Lake Trail Riders
- Brighton Trail Riders
- Ortonville Recreation Equestrian Association
- Huron River Riders
- Waterloo Horseman's Association
- Shiawassee Trail Riders
- Polly Ann Trail
- Rose Oaks Equine Adventurers
- Oakland County Schools Equestrian Teams
- Kensington Trail Riders

Biking Association (MMBA) is an advising member to OTAC with staff and members frequently providing updates, insights, and advice regarding mountain biking opportunities and issues. The Metro North Chapter and Metro South Chapter of MMBA specifically cover the Oakland County geographic area (dividing line is Woodward Avenue and M-59). As is illustrated on the map on the previous page, mountain bike trail opportunities are offered at multiple locations in Oakland County. In addition to those trails highlighted on the map, the MMBA also recently built mountain bike trails in Hubbell Pond Park in the Village of Milford.

2.4 RELATED EFFORTS AND INITIATIVES

Several significant planning efforts exist or are under development in the County that are closely correlated to the Oak Routes initiative and the emerging non-motorized system.

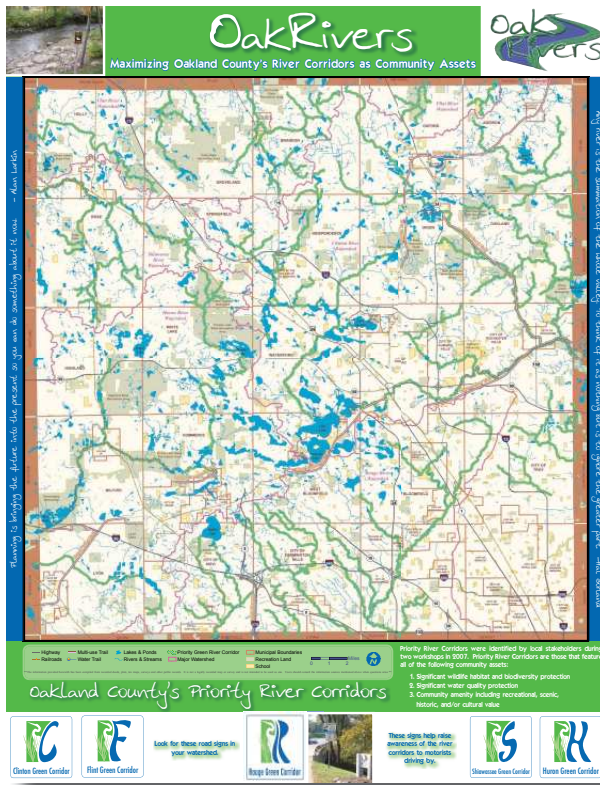
OAK RIVERS/GREEN RIVERS

The Oak Rivers (Green Rivers) grew out of the Rouge Green Corridor effort that began in 2004 in southeast Oakland County within Birmingham, Beverly Hills, and Southfield. The purpose of the Rouge Green Corridor effort is to provide local communities with tools to identify and facilitate the promotion, protection and enhancement of riparian green corridors as unique assets in the watershed. The Rouge Green Corridor effort included a public education poster, branding logo, and planning manual.

From the success and enthusiasm that resulted from the Rouge Green Corridor project, the Oakland County Environmental Stewardship Program initiated the OakRivers program in order to maximize Oakland County's river corridors as community assets. Priority River Corridors were identified by 100 local stakeholders during two workshops in 2007. Priority River Corridors are those that feature all of the following community assets:

- Significant wildlife habitat and biodiversity protection
- Significant water quality protection
- Community amenity including recreational, scenic, historic, and/or cultural value





OAKLAND PROGRAM

The goal of Oakland County's Environmental Stewardship Program is to develop a network of linked natural areas throughout the County. In 2002, the Environmental Stewardship Program partnered with the Michigan Natural Features Inventory (MNFI) and created the first County-wide potential natural areas coverage. The companion report, the Oakland County Potential Conservation/Natural Areas Report (completed in 2004), identifies and ranks Potential Natural Areas remaining in the County.

"Potential Conservation Areas are defined as places on the landscape dominated by

2004 Oakland County



Potential Conservation/Natural Areas Report

Prepared by:
Michigan Natural Features Inventory
Prepared for:
Oakland County Planning & Economic Development Services

native vegetation that have various levels of potential for harboring high quality natural areas and unique natural features. In addition, these areas may provide critical ecological services such as maintaining water quality and quantity, soil development and stabilization, pollination of cropland, wildlife travel corridors, stopover sites for migratory birds, sources of genetic diversity, and floodwater retention." However, the actual ecological value of these areas can only be truly ascertained through on the ground surveys.

The report documents that Oakland County remains rich with high quality natural resource areas that still look and function the way they did 200 years ago. Some of these sites have the potential of harboring endangered, threatened, or special concern animal and plant species. With the high rate of development and its associated stresses on the natural environment, conservation of these remaining areas and their native plant and animal populations are vital if the County's diverse natural heritage is to be maintained.

The County utilized GIS to develop a map illustrating potential conservation sites. Emphasis was specifically placed on the intactness of the potential conservation area, wetlands and wetland complexes, riparian corridors, and forested tracts. The potential areas were then classified as Priority One, Two, or Three (by using natural break classification) based on the number of points they were given during the analysis.

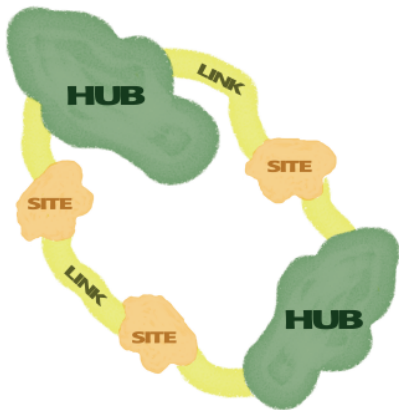
GREEN INFRASTRUCTURE VISION

The Potential Natural Area information serves as the foundation for Oakland County's Green Infrastructure Visioning effort. The Green

Infrastructure Vision focuses on identifying an interconnected network of green space that conserves natural ecosystem values and functions, guides sustainable development, and provides communities with associated economic and quality-of-life benefits.






Green Infrastructure Networks consist of the following components:

- **Hubs:** Hubs anchor the network and provide an origin or destination for wildlife. Hubs range in size from large conservation areas to smaller parks and preserves. Hubs provide habitat for native wildlife and help maintain natural ecological processes.
- **Sites:** Smaller ecological landscape features that can serve as a point of origin or destination or incorporate less extensive ecological important areas.
- **Links:** The connections that hold the network together and enable it to function. Links facilitate movement from one hub to another.



Oakland County Planning’s Environmental Stewardship Program provides green infrastructure capacity building assistance to local governments, businesses, work groups and individual citizens in both urban and rural areas. Embedded within the green infrastructure planning effort is the idea that all stakeholders should have the opportunity to create and implement their own unique piece of the overall County Vision.

At a series of work sessions being held across Oakland County, community participants inventoried existing green infrastructure features, established collaboration opportunities and considered how to set and achieve future conservation goals. Many of the identified hubs, sites, and links fall within public parkland. Trails can play a key role by linking the hubs and sites of the green infrastructure network.

Natural Resources	Parks & Recreation	Community Plans	Computer Technology	Local Knowledge
				

Green Infrastructure Vision
Oakland County, Michigan

OAKLAND COUNTY PARKS AND RECREATION MASTER PLAN - 2007

The Oakland County Parks and Recreation Department completed a Parks and Recreation Master Plan in March 2007. The purpose of the plan is to guide recreation and planning efforts through 2011 and to meet necessary MDNR standards for eligibility for grant programs. The Master Plan included an overall description of the County and overview of the administrative structure and financing for the department, an inventory of County Parks, a needs assessment and summary of public input, goals and objectives, as well as a capital improvement plan and implementation strategies.



OAKLAND COUNTY PARKS AND RECREATION MASTER PLAN GOALS:

- Acquire, preserve and manage parkland and natural resources.
- Provide outstanding facilities and programs.
- Provide the highest quality recreational and educational services.
- Enhance communications, cooperation and coordination with intergovernmental agencies, the private sector and other organizations.
- Sustain the financial stability and viability of parks system.

BLUEWAY WATER TRAIL EXPLORATORY COMMITTEE

Oakland County Planning & Economic Development Services is coordinating an effort to evaluate and promote five water trails including:

- Shiawassee River (Holly to Fenton)
- Huron River (Proud Lake State Recreation Area to Milford)
- Clinton River (Auburn Hills to Rochester)
- Clinton River (Waterford Township)
- Rouge River (City of Southfield)

With the assistance of Oakland County Parks, Riverside Kayak Connection, local communities, and other agencies, the Blueway Water Trail Committee will evaluate the current river status, existing gaps, enhancement needs, potential economic implications, and formulate



IMPORTANCE OF RIVERS IN OAKLAND COUNTY

- River corridors connect communities with their history and culture
- River corridor vegetation is the last defense for protecting the water quality of lakes, rivers, and streams
- River corridors provide critical wildlife habitat and movement pathways
- River corridors cross boundaries and tie communities together
- River corridors provide significant economic value for communities (Ecological Services, Recreational Value, Tourism value, Property Value)

a recommendation to OTAC regarding further action on the topic. Future activities for the Blueway Water Trail Committee and OTAC may include assisting with wayfinding signage, river guide/map, interpretive kiosks, and canoe/kayak events.

Water resources continue to be an essential component of Oakland County's natural heritage. The headwaters for five out of the six major rivers found in the County originate here and meander throughout the region and drain into Lake St. Clair, Lake Erie, or the Saginaw Bay. The County's lake and river systems also support a wealth of water-based recreational opportunities including fishing, boating, bird watching, and swimming.

SHIAWASSEE RIVER WATER HERITAGE TRAIL SIGNAGE MANUAL

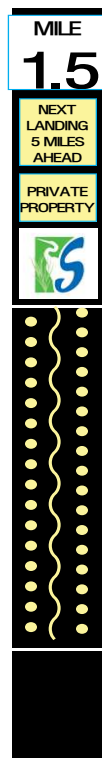
As an integral part of the development of the Top of the Shiawassee River Water Heritage Trail, a Trail Signage Manual was prepared in the spring of 2008 by Oakland County Planning & Economic Development Services and Headwaters Trails, Inc. This manual serves as a guideline for the effort to construct wayfinding signage along the seven mile water trail. Additionally, it is hoped that the signage manual will be used as a model for future water trail segments upstream.

Signage at the trailhead, Water Works Park in the Village of Holly, will provide general trail maps and safety information for canoeists, kayakers and other river users before beginning their journey.

Downstream messaging will include mile markers, safety markers, directional information and identification of natural features that are vital to building an understanding of watershed functioning. Installation of the signage is scheduled to be completed by the end of 2008. Funding for the Signage Manual and sign installation effort was provided through a grant awarded to Headwaters Trails, Inc. by the Saginaw Bay Watershed Initiative Network.

PLACE BASED ECONOMY INITIATIVE

Oakland County Planning & Economic Development is currently working on a new initiative related to "place-based economies". The initiative focuses on the establishment of identifiable "districts" within the County based on the distinct resources and opportunities those areas provide. The overall goal is to then be able to focus and coordinate marketing and tourism efforts based on the unique character and resources of the "district", as is illustrated by the examples on the following page.



Oakland County Michigan

L. BROOKS PATTERSON
OAKLAND COUNTY EXECUTIVE

Dynamic, Diverse, & Destined to be Your Home



Come Visit!
...and we'll show you

The Huron River Valley
A World of Outdoor Adventure and Small Town Charm

The Experience Awaits You

Oakland County Michigan

- Shop Main Street Boutiques
- Canoe & Kayak
- Learn of Historic Mills & Automobile Heritage
- Edsel Ford Haven Hill Retreat
- Study Glacial Landforms
- Boat Our Freshwater Lakes
- Back Roads Fall Color Tours
- Horseback Riding
- Historic Architecture
- Barn Tours
- Mitford Memories Festival
- Highland Station Concerts
- Detroit Symphony at the Lake
- 4th of July Picnics
- Natural Areas Tours
- Rattlesnake Roundup
- Underwater Habitat Bubbles
- Farm Days
- Osprey Viewing
- North American Flyway
- Cross Country Bike Trails
- Mountain Bike Bonanza
- Fishing & Hunting
- Outdoor Arts
- Candlelight Nature Walks
- Camp by the Fire
- Walk with Edison & Lindberg
- Explore Fine Restaurants
- Golf with Nature
- and Much, Much, More...

Come Explore!

The Great Outdoors.....
& Historic Landmarks

Featured: Edsel Ford Barn

Part of the Edsel Ford Haven Hill Estate located in Highland Station State Park. As a former residence of color and genius, Ford (1876) was one of the last great industrialists and philanthropists of his era. Spending his childhood and young adulthood in the Huron River Valley, he was a pioneer in the development of the automobile industry. His estate, the Edsel Ford Barn, is a masterpiece of architecture and a place where you can experience the life of a pioneer. Become a part of the Journey. Call for more information. (248) 767-1750

© 2008 Oakland County Michigan
Or visit the Park Office at (248) 688-3750

OAKLAND COUNTY PLANNING & ECONOMIC DEVELOPMENT SERVICES - WORK IN PROGRESS - PRELIMINARY DRAFT 4/16/08 LSF

